

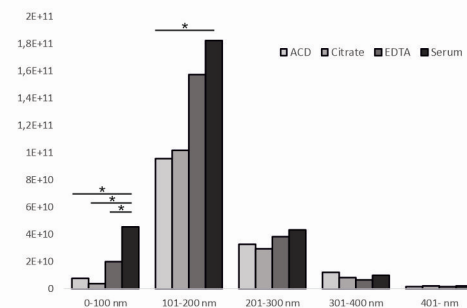
A

	WBC 10 <sup>9</sup> /L		RBC 10 <sup>12</sup> /L		PLT 10 <sup>9</sup> /L	
	I	II	I	II	I	II
ACD	0.03	0	0.0	0.0	0.0	1.0
Citrate	0.0	0.05	0.0	0.0	0.0	1.0
EDTA	0.0	0.05	0.0	0.0	1.0	1.0
Serum	0.0	0	0.0	0.0	0.0	0.5

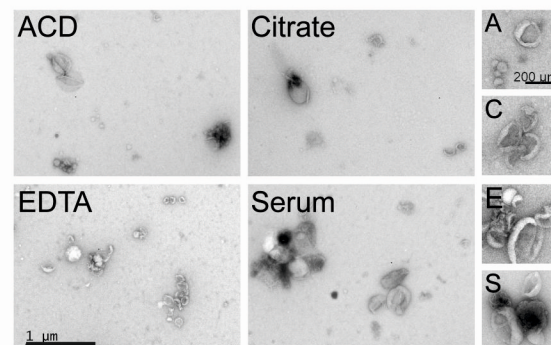
B

			particles/ ml	mode (nm)	sd ±
		EVII	9.20E+09	106.1	5.3
	II	EVI	3.07E+09	130.2	8.4
		EVII	2.90E+09	127.0	6.2
		EVIII	2.78E+09	160.9	7.5
Citrate	I	EVI	5.72E+09	126.6	8.8
		EVII	8.66E+09	119.1	14.1
	II	EVI	3.35E+09	117.8	7.5
		EVII	2.74E+09	162.6	5.6
		EVIII	2.46E+09	134.3	10.4
EDTA	I	EVI	8.92E+09	138.3	25.9
		EVII	7.20E+09	125.6	11.0
	II	EVI	5.14E+09	145.1	9.1
		EVII	3.70E+09	107.3	12.9
		EVIII	4.08E+09	113.0	7.6
Serum	I	EVI	7.60E+09	87.8	3.2
		EVII	1.12E+10	104.8	18.5
	II	EVI	7.12E+09	128.8	17.5
		EVII	6.21E+09	98.3	9.1
		EVIII	9.65E+09	108.0	10.5

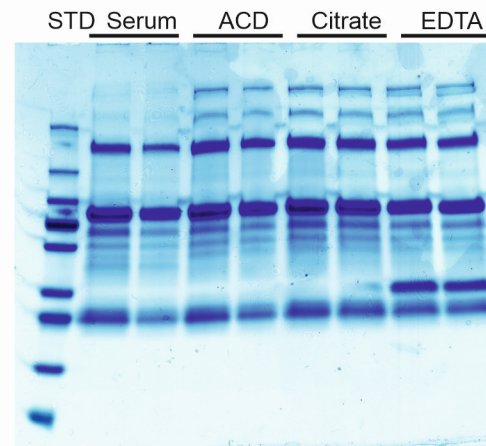
C



D



E



F

